



LV PROPERTY.CO.UK®



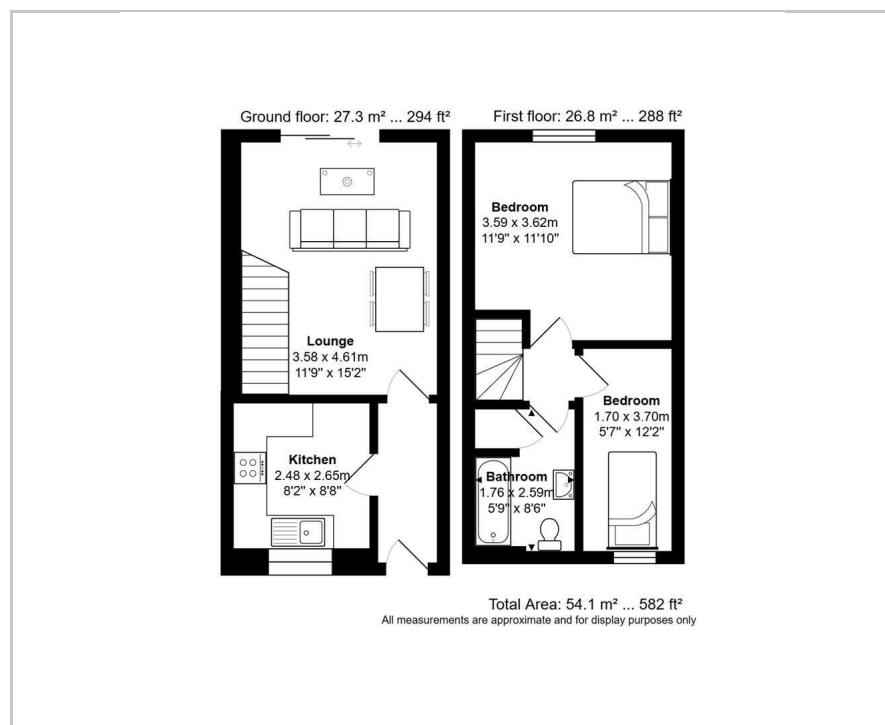
56 Salstar Close

Birmingham, B6 4PP

Offers Over £145,000®



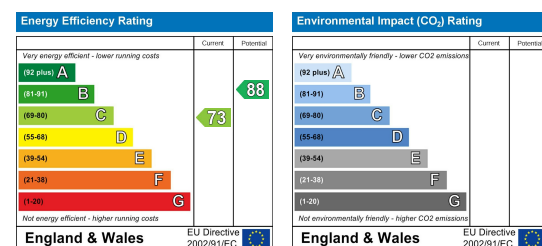
Floor Plan



Area Map



Energy Efficiency Graph



Viewing

Please contact our LV PROPERTY Office on 01212857575 if you wish to arrange a viewing appointment for this property or require further information.

- Large Family Home
- 582 Sqft
- Close to Schools and Local Transport Links
- Spacious Lounge
- Off Road Parking
- Great Location
- Freehold Property
- Fully Fitted Kitchen
- Family Bathroom
- Council Tax Band B

Welcome to Salstar Close, Birmingham - a charming terraced house that could be your next dream home! This property boasts a cosy reception room, perfect for relaxing or entertaining guests. With two bedrooms, there's plenty of space for a small family or guests to stay over. The bathroom is conveniently located to serve both bedrooms, ensuring privacy and ease of access.

Spanning 582 sq ft, this house offers a comfortable living space with a layout that maximises functionality. The property also features parking for one vehicle, making it convenient for those with a car.

Located in Birmingham, this house provides easy access to local amenities, schools, and transport links, making it an ideal choice for anyone looking for a convenient and comfortable living space. Don't miss out on the opportunity to make this house your own - book a viewing today and envision the possibilities that Salstar Close has to offer!



These particulars, whilst believed to be accurate are set out as a general outline only for guidance and do not constitute any part of an offer or contract. Intending purchasers should not rely on them as statements of representation of fact, but must satisfy themselves by inspection or otherwise as to their accuracy. No person in this firm's employment has the authority to make or give any representation or warranty in respect of the property.



0121 285 7575
www.lvproperty.co.uk

157c Warstone Lane, Jewellery Quarter,
Birmingham, West Midlands, B18 6NZ